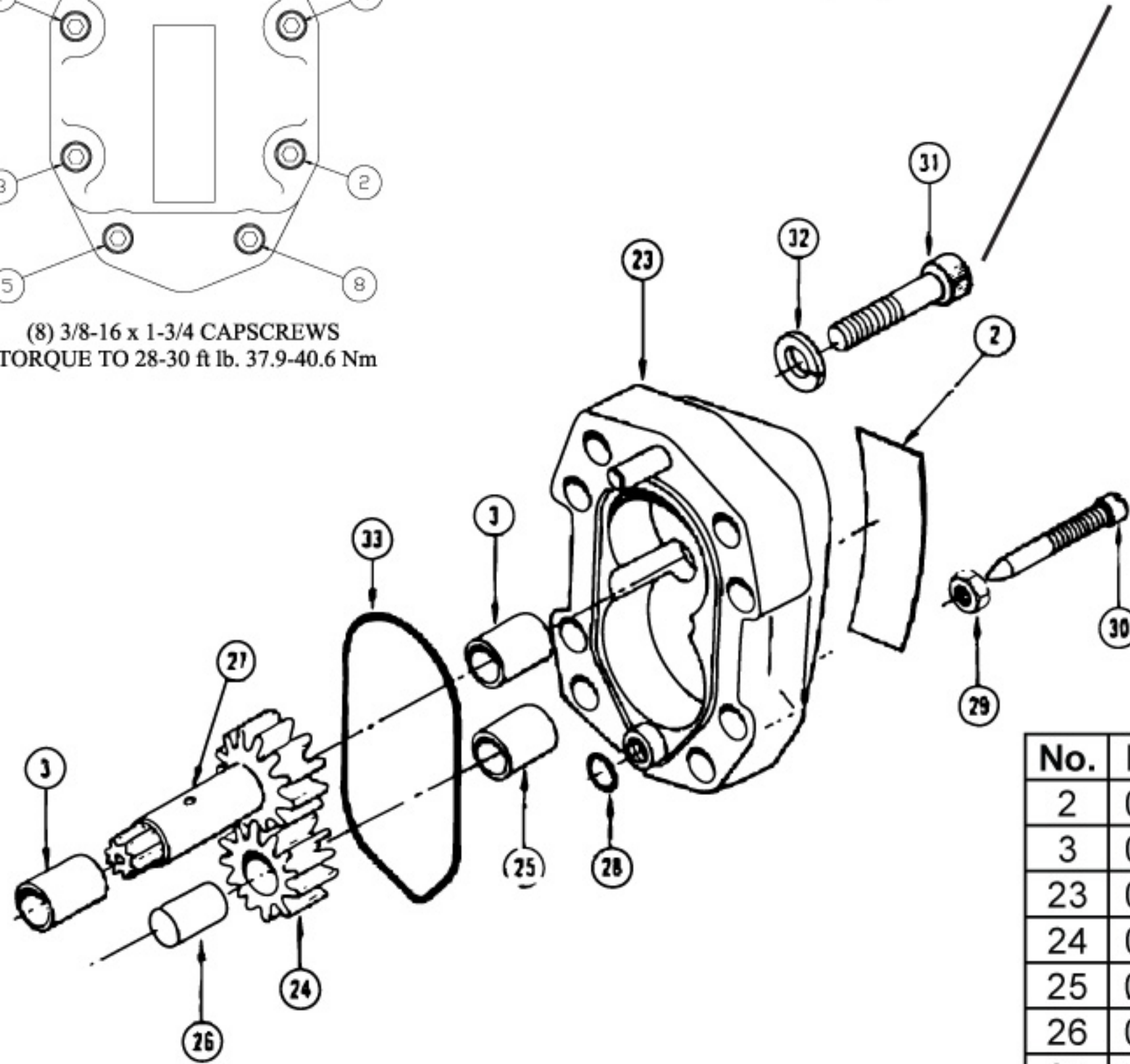
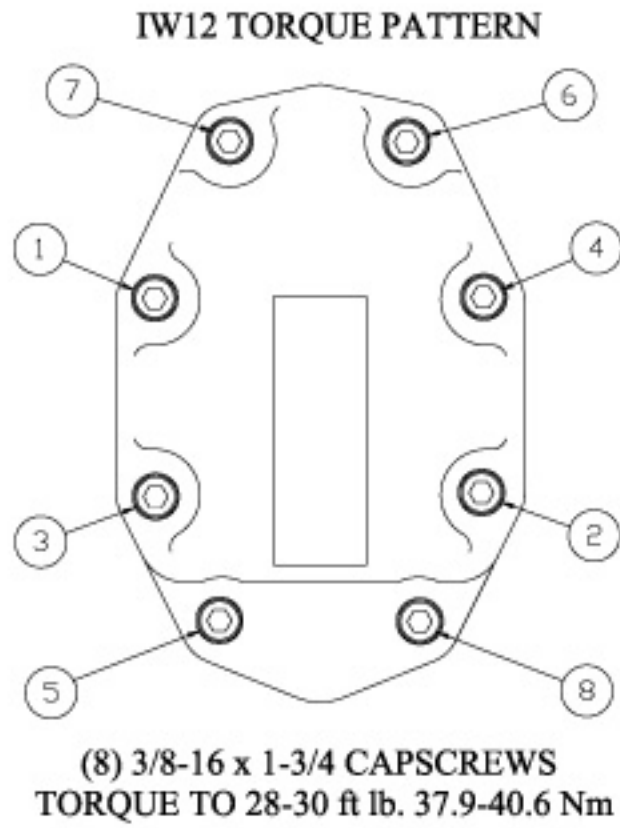


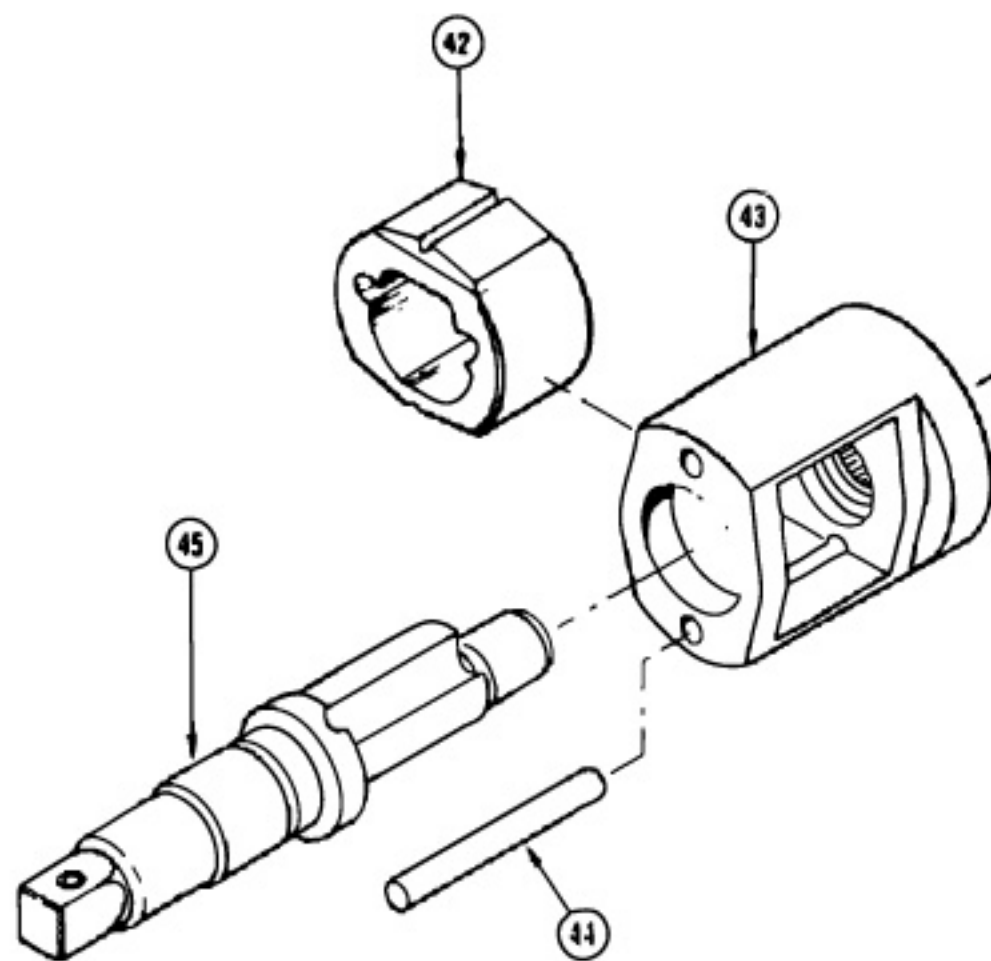
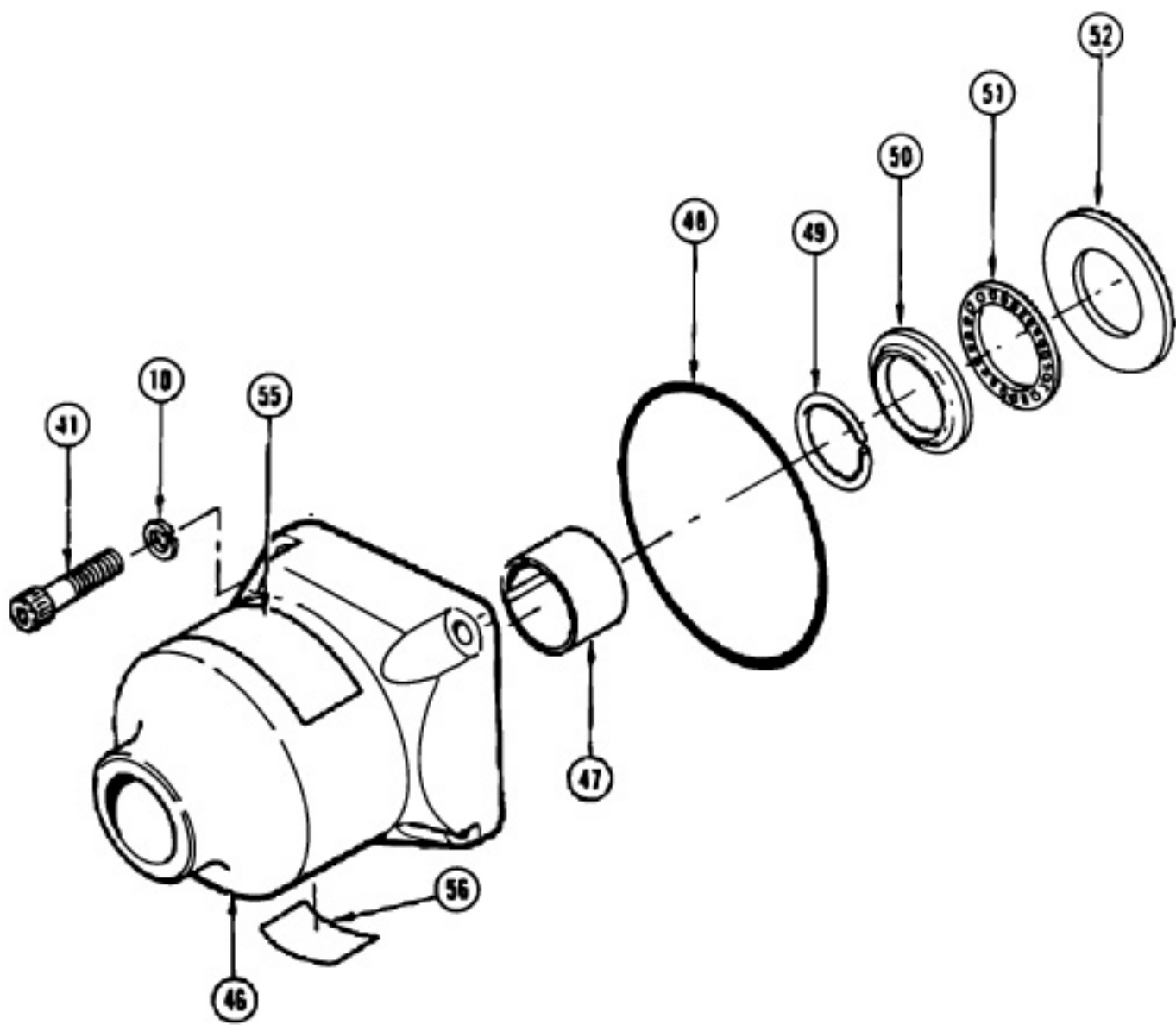
No.	Part #	Description
1	07999	MAIN HOUSING ASSEMBLY
4	07988	COMP COIL SPRING-SPOOL
5	07982	SPRING REST
6	07985	COMP COIL SPRING-RELIEF
7	07993	RELIEF POPPET
8	07986	RELIEF SEAT
9	07998	ON/OFF SPOOL WELDMENT-OC
11	06533	O-RING 3-916 R17 90D BUNA
12	22063	SPOOL CAP
13	00026	O-RING 2-008 R16
14	23678	HEADED PUSH PIN
15	07996	TRIGGER
16	00025	HSHCS 10-24UNCx1-3/4 GR8
17	08002	REVERSING SPOOL
18	01211	O-RING 2-016 R16 70D BUNA
19	08015	SPIRAL BACK-UP RING -.016
20	08016	RETAINING RING-3/4 EXT
21	04939	LEVER
22	00720	SET SCREW 1/4-20x3/8 CUPT HS
34	22064	ROD WIPER
35	08017	O-RING 2-118 R16 70D BUNA
36	09396	BACK-UP RING 7/8X3/32 -.118
37	07987	BACK-UP WASHER
38	00166	RETAINING RING
39	08019	THRUST RACE-.877 X 1.427 X .030
40	08020	THRUST BRG-.877 X 1.427X .0781
53	00936	ADAPTER
54	06971	ESNA LOCKNUT 10-24 PLATED

CLEAN, APPLY 242 LOCTITE AND TORQUE  
 (8) CAPSCREWS TO 28-30 ft lb / 37.9-  
 40.6 Nm. USING THE TORQUE PATTERN  
 SHOWN AT THE BOTTOM LEFT.



No.	Part #	Description
2	08012	NAME TAG-IW12
3	08014	DU BUSHING-7/8 ID X 3/4 LONG
23	07997	MOTOR CAP ASSEMBLY
24	07989	IDLER GEAR ASSEMBLY
25	07978	IDLER GEAR BUSHING
26	07991	IDLER SHAFT
27	08001	MAIN SHAFT
28	00717	O-RING 2-010 R16
29	00429	NUT 5/16-18 HEX PLAIN GR 8
30	19453	RELIEF ADJUSTMENT SCREW
31	00682	HSHCS 3/8-16UNCx1-3/4 GR8 PLN
32	01459	LOCKWASHER 3/8 PLATED
33	08023	O-RING 5-821





No.	Part #	Description
10	00145	LOCK WASHER
41	00682	HSHCS 3/8-16UNCx1-3/4 GR8 PLN
42	08067	HAMMER-IW12
43	20257	HAMMER FRAME
44	08069	HAMMER PIN-IR 2910-704
45	22728	ANVIL 3/4 SQ DRIVE
45	20263	ANVIL 3/4 SQ. DR. EXT
46	29087	HAMMER CASE
46	22729	IMPACT MECH 3/4 SQ DRIVE
47	20258	BUSHING
48	00149	O-RING 2-042 R16 70D BUNA
49	20262	RETAINING RING
50	21408	THRUST RACE
51	09878	THRUST BRNG.1.125X1.750X.0781
52	20259	RETAINER
55	17275	DANGER STICKER-IW09/IW12
56	03693	CC STICKER